



IF YOU HAVE TO FILL UP, HERE'S
**HOW TO STAY SAFE
AT THE PUMP.**



STUNNING STATS

71% of gas pump handles are considered **HIGHLY CONTAMINATED.**



On average, pump handles have more bacteria than the common household toilet seat.

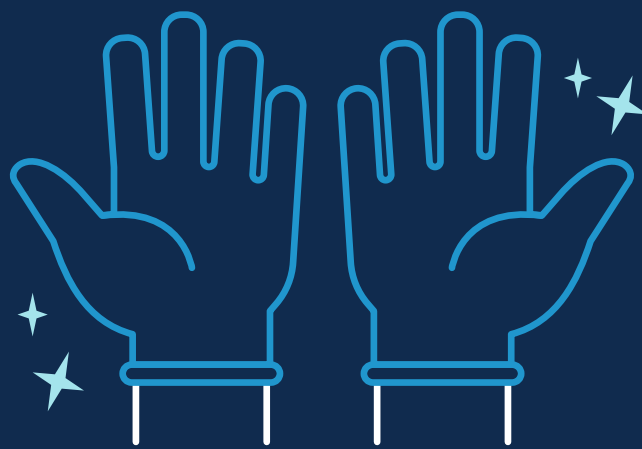
11,000x



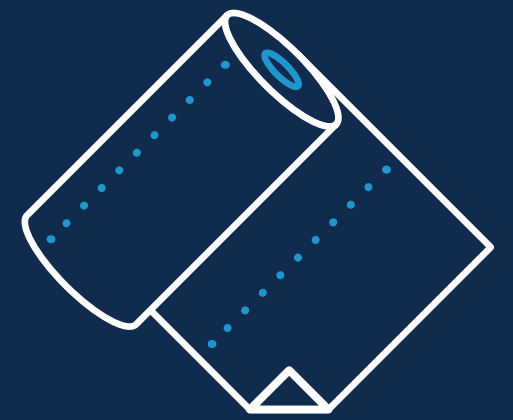
HOW TO STAY CLEAN AND SAFE

WEAR GLOVES WHEN PUMPING AND PAYING.

Disposable gloves are even better so that you can toss them right after you're done.



If gloves aren't available, **USE PAPER TOWELS TO GRIP HANDLES.**



KEEP YOUR DISTANCE from other patrons.

6 FT.



KEEP A BOTTLE OF HAND SANITIZER IN YOUR VEHICLE to use right after pumping.



And as soon as you can, **WASH YOUR HANDS USING THE 20 SECOND RULE.**



PRACTICE SAFETY. AND DRIVE AWAY CLEAN.

Follow those easy steps and leave the bacteria at the pump.

